

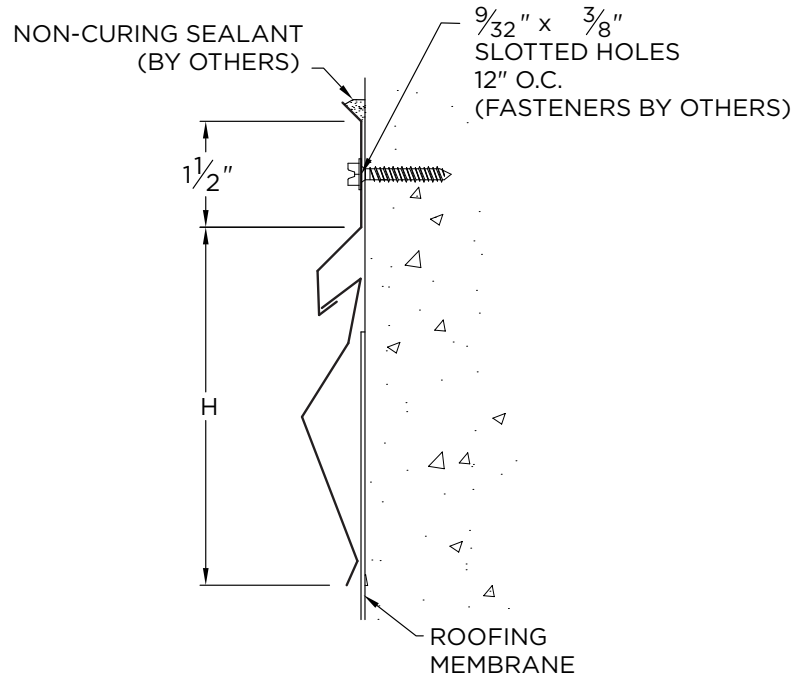


VERSITRIM 2-PIECE COUNTERFLASHING

SURFACE MOUNTED

NOTES

- Pre-Notched Lap Joints
- No Fasteners Provided



PROJECT INFO

Project Name: _____

Architect: _____

Roofing Contractor: _____

Project Type:

By selecting this box you have verified and confirmed that dimensions, sizes, and quantities are correct. All products will be installed in strict accordance with printed instructions.

Date: _____

Customer Service
800-558-2162
(Metal-Era)

SHT #: _____ of _____

DATE: **09/24/24**

DRN BY: **JJC**

CKD BY: **MM**

DWG #: 18015-24499

REV: **C**

DIMENSIONS

Surface Mounted (H DIM)

3.5" (CFW2-350R)

4" (CFW2-400R)

5" (CFW2-500R)

MATERIAL

24 Ga. Galv. Steel

22 Ga. Galv. Steel

.040" Aluminum

.050" Aluminum

OTHER: _____

Color: _____

Finish: _____

QUANTITIES

_____ Lineal Feet (12'-0" Lengths)